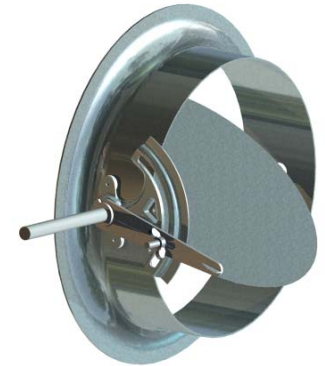


# SUBMITTAL DATA

## STICKTITE QUALITY BELLMOUTH TAKE-OFF

### SPECIFICATIONS:

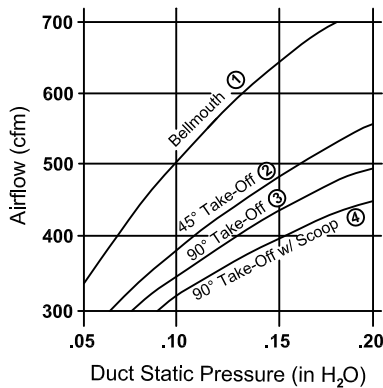
The Model BMD-E was developed in response to contractors and engineers need for a hand quadrant that extends beyond insulation for visibility and functionality. This bellmouth take-off incorporates a solid aluminum full length shaft and a 24ga galvanized blade through 10" and 20ga. galvanized through 16". This is a take-off and damper that engineers and contractors can depend on for successful air balancing.



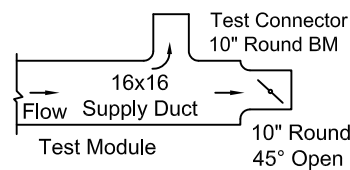
### STANDARD CONSTRUCTION:

- |  |  |
|--|--|
| Body: includes stick-on gaskets and pre-drilled holes            | Bearings: Molded synthetic nylon 6/6   |
| Blade: 24ga. galvanized through 10" 20ga. galvanized through 16" | Quadrant: Steel heavy duty body with cast aluminum handles (bolted on using locking type nuts) |
| Shaft: 1/2" o.d. solid aluminum                                  | Stand-offs: 1/2" o.d. molded synthetic nylon 6/6 that extends 1 1/2" from bellmouth body.      |

### PERFORMANCE



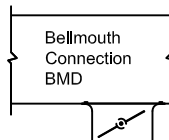
- ① — 8" Bell Mouth
- ② 45° Take-off Duct Opening 6"x13 3/4"; 3" Duct Connection
- ③ Straight 8" 90° Take-off
- ④ Straight 8" 90° Take-off w/ Air Scoop



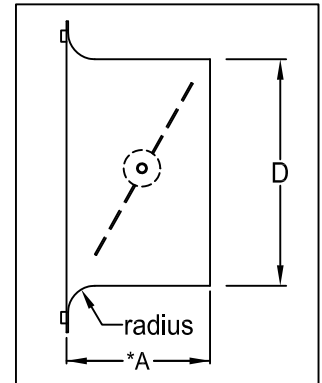
**Typical Duct Take-off**

NOTE: Alternate fittings to be used when duct height does not permit the use of the full size bellmouth

**Preferred Take-off Detail**



\*A dimension is approx.



#### Available Sizes

ØD (in.)	radius (in.)	*A
3	1/2	2"
4	5/8	2-1/2"
5	3/4	2-1/2"
6	7/8	2-1/2"
7	1	2-1/2"
8	1	2-1/2"
9	1	2-1/2"
10	1	3"
12	1	3-1/2"
14	1	3-3/4"
16	1	4"

Includes Stick on Gaskets & Pre-drilled Mounting Holes.

### Bellmouth Duct Sizing Chart Low/Medium Pressure System

Round Duct Size	Max CFM @ 800FPM	Max CFM @ 1400FPM
	CFM Range	CFM Range
Ø5"	70-125	140-200
Ø6"	125-150	200-280
Ø7"	150-225	280-380
Ø8"	225-300	380-500
Ø9"	300-400	500-600
Ø10"	400-700	600-800
Ø12"	700-1000	800-1100
Ø14"	1000-1500	1100-1600
Ø16"	1500-2000	1600-2200

Consult Factory For Larger Sizes

Round Duct Size	Hole Size	Minimum Duct Height	Loss C
Ø5"	8"	9"	.03
Ø6"	9"	10"	.03
Ø7"	10"	11"	.03
Ø8"	11"	12"	.04
Ø9"	12"	13"	.06
Ø10"	13"	14"	.07
Ø12"	15"	16"	.10
Ø14"	17"	18"	.13
Ø16"	19"	20"	.17

C=Loss Coefficient

Due to continuing research, United Energetech reserves the right to change specifications without notice.

Job Name: Location: Architect: Engineer: Contractor:	<input type="checkbox"/> <b>MODEL BMD-E</b>						
	<table border="1" style="width: 100%;"> <tr> <td style="width: 33%;">DRAWN BY: MHM</td> <td style="width: 33%;">DATE: 12-16-10</td> <td style="width: 33%;">REV. DATE:</td> </tr> <tr> <td>REV. NO.</td> <td>APPROVED BY: BGT</td> <td>DWG. NO.: <b>J-9</b></td> </tr> </table>	DRAWN BY: MHM	DATE: 12-16-10	REV. DATE:	REV. NO.	APPROVED BY: BGT	DWG. NO.: <b>J-9</b>
DRAWN BY: MHM	DATE: 12-16-10	REV. DATE:					
REV. NO.	APPROVED BY: BGT	DWG. NO.: <b>J-9</b>					